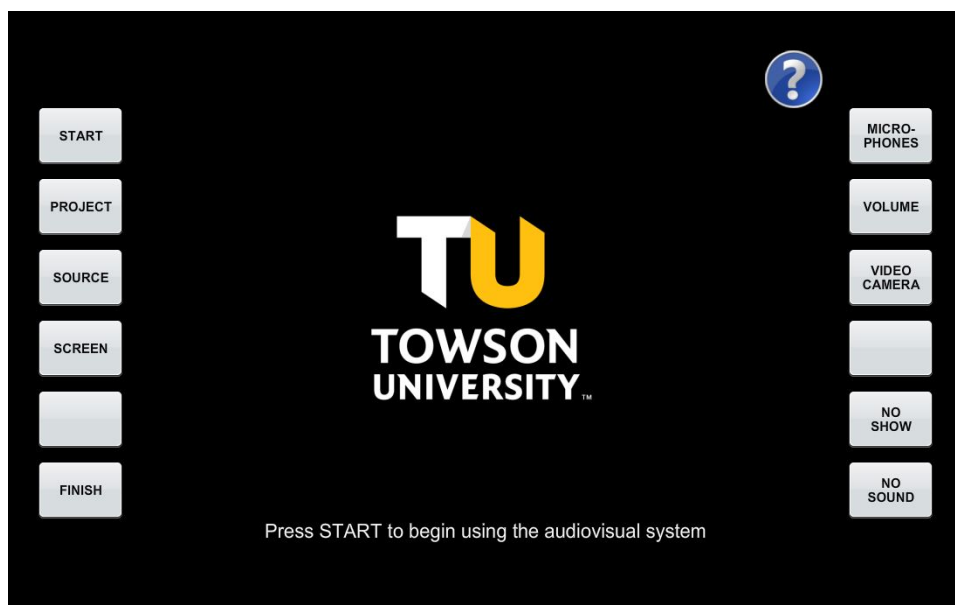


- Starting the Classroom System
- Source Options
- Shutting down the system
- ▼ Solstice Pod
 - Connecting to the Solstice Pod
 - ▼ Laptop
 - Sharing through the browser
 - ▼ Mobile devices
 - IOS
 - Android
 - Additional Information
- ▼ Science Complex Lighting Control
 - Raise/Lower (Up/Down Arrows at Bottom)

[View PDF](#)

Starting the Classroom System

If the touch screen is blank, press the screen to wake up the panel.



1. Press **Start** to start using the system.
2. Press **Project** to start projecting to the audio visual system
 - You will be able to choose which display to output from
 - You can change the output any time through the **Source** option

Source Options

The following are different source options available. The room computer is the default option

Your choices may vary depending on the room and the equipment available

Source	Action
Computer	Duplicates the content of the room computer
Auxiliary	Duplicates the content of a connected HDMI device
Document Camera	Displays the content from the document camera
Wireless Input	Wirelessly displays the content from a device connected to a solsticepod
Blu-ray	Displays the content of a Blu-ray player

Shutting down the system

Press **Finish**

Confirm that you are finished using the system by pressing **Yes**

Make sure to log out of the computer

Solstice Pod

You can use the solsticepod to wirelessly project a mobile device or laptop.

The device that you wish to share content with has to be connected to the tu-secure wireless network.

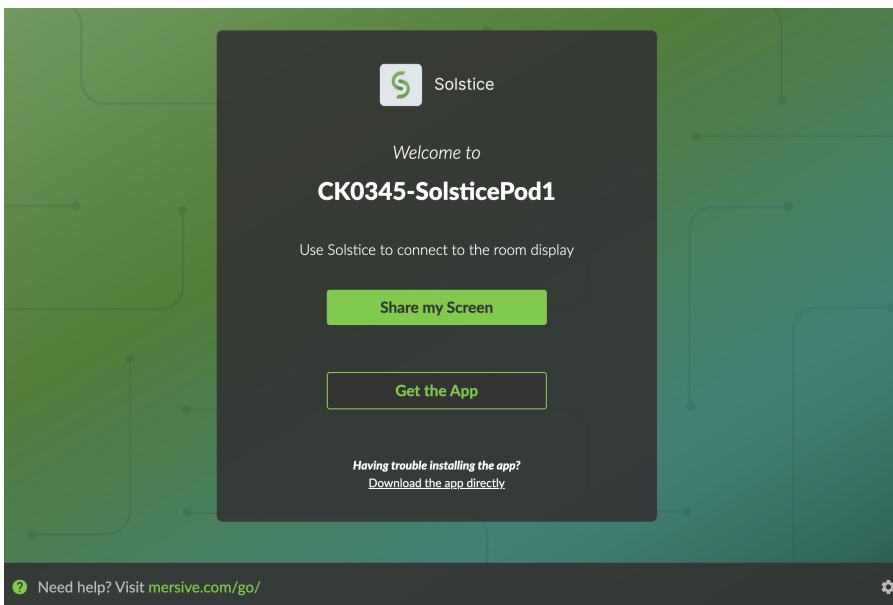
Connecting to the Solstice Pod

You can either type in the IP address or the link shown on the screen as highlighted in orange .



Laptop

After visiting the link or IP address above, you will have the option to share you screen using the web browser or through the app by downloading it.



Administrator privileges are required to install the app

MacOS permissions

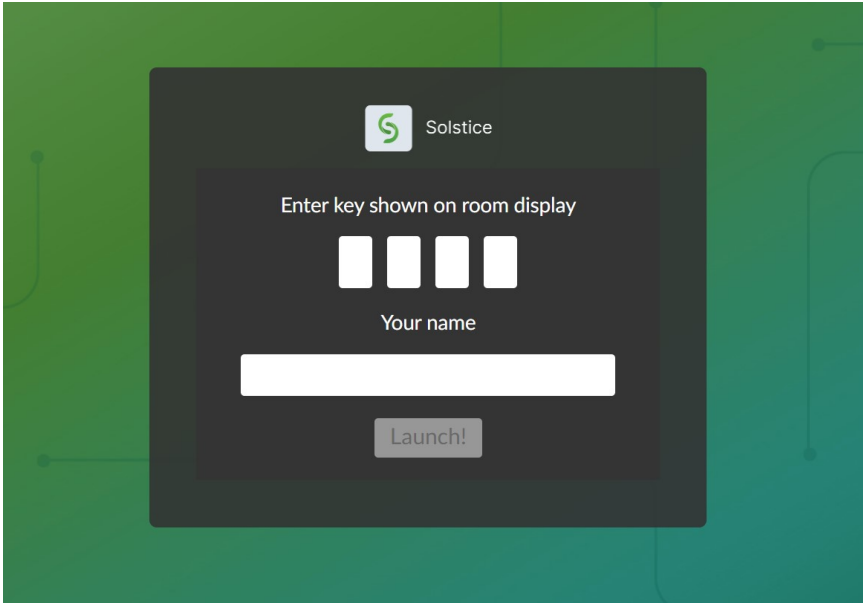
On MacOS, you will have to allow the browser to have screen sharing permission enabled and have the browser restart if you haven't done so already



Limitation using Safari

If you are using Safari, or any browsers in an IOS device, you will not have the option to share your screen without downloading the app.

You will be prompted to enter a nick name and the key on the screen after you connect.



Sharing through the browser

If your browser supports it, press **Share my Screen** and you will be presented with a warning screen. To be able to share, you will have to go past these warnings

Firefox



Warning: Potential Security Risk Ahead

Firefox detected a potential security threat and did not continue to **10.21.39.96**. If you visit this site, attackers could try to steal information like your passwords, emails, or credit card details.

[Learn more...](#)

[Go Back \(Recommended\)](#)

[Advanced...](#)

10.21.39.96:6443 uses an invalid security certificate.

The certificate is not trusted because it is self-signed.

Error code: [MOZILLA_PKIX_ERROR_SELF_SIGNED_CERT](#)

[View Certificate](#)

[Go Back \(Recommended\)](#)

[Accept the Risk and Continue](#)

- Click **Advanced** then **Accept the Risk and Continue**

Chrome



Your connection is not private

Attackers might be trying to steal your information from **10.21.39.96** (for example, passwords, messages, or credit cards). [Learn more](#)

NET::ERR_CERT_AUTHORITY_INVALID



To get Chrome's highest level of security, [turn on enhanced protection](#)

Hide advanced

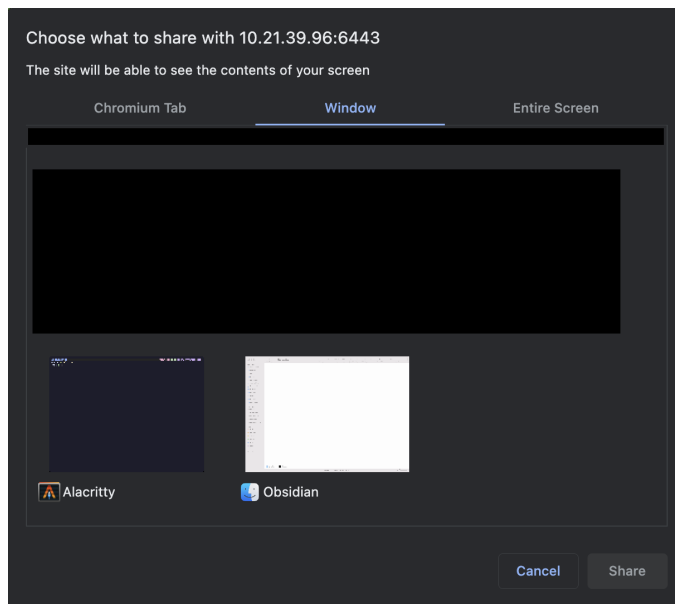
Back to safety

This server could not prove that it is **10.21.39.96**; its security certificate is not trusted by your computer's operating system. This may be caused by a misconfiguration or an attacker intercepting your connection.

[Proceed to 10.21.39.96 \(unsafe\)](#)

- Click **Advances** then **Proceed to <IP address> (unsafe)**

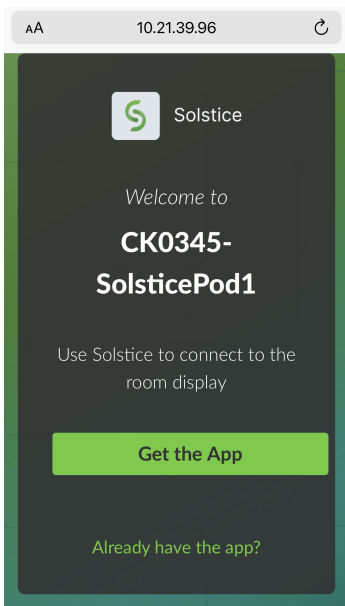
A prompt to select which screen to share will appear



Click the window that you'd like to share and click **Share** to share the screen.
Closing the tab with the Solstice page will stop the screen share.

Mobile devices

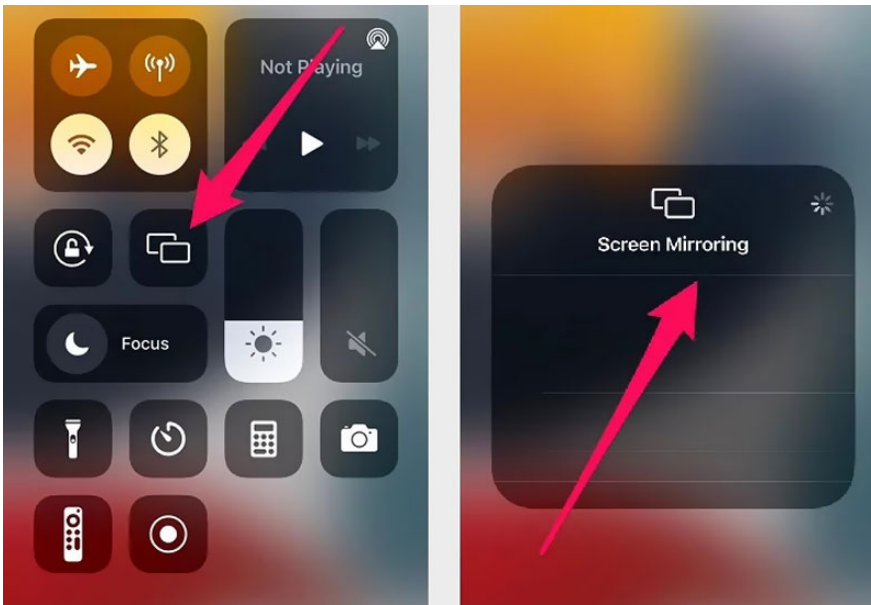
If using a smartphone or a tablet, it is a requirement to download the Solstice app.
Pressing the "Get the App" button will take you to your device's respective app store.



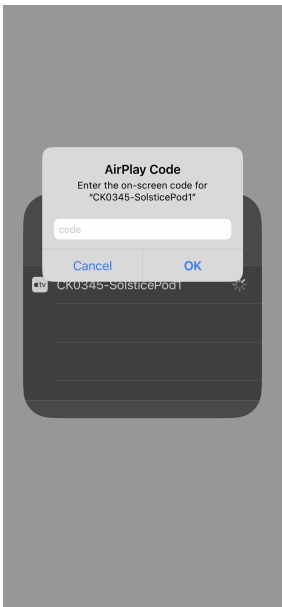
IOS

After installation, open the app

Swipe down to get to the **Access Control Center** and press the **Screen Mirroring** button

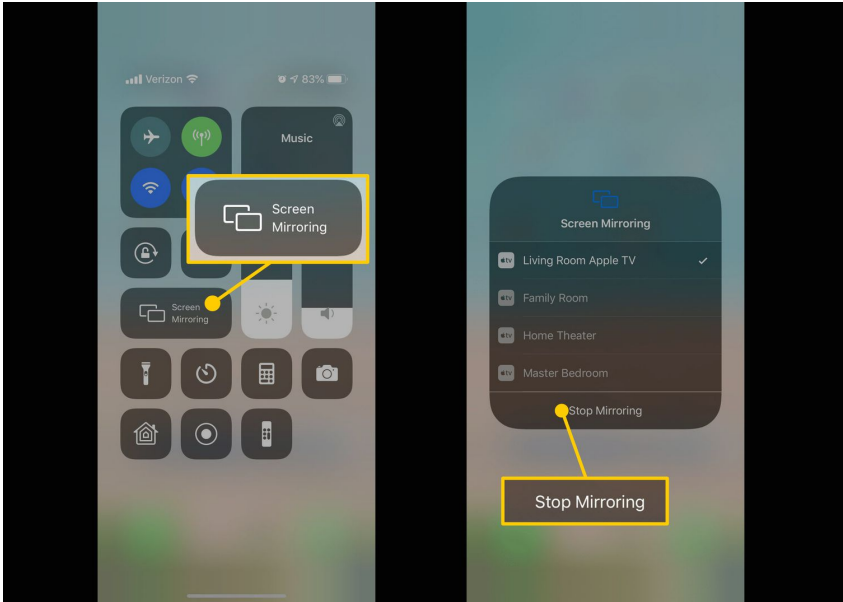


An entry for a solsticepod should appear and after clicking the entry for the solsticepod, you will be prompted to enter the key on the screen again.



Your screen will start sharing.

To stop sharing your screen, swipe down to go to **Access Control Center** and press the **Screen Mirroring** button. Press **Stop Mirroring**.



Android

Work in Progress

Additional Information

See the manufacturer's [documentation](#) for more detailed information.

Science Complex Lighting Control

Teaching Room Wall Control Switch (Custom 5 Button Station)

GENERAL - All lights in the room turn on and/or go to:

- General Lighting to 100%
- Teaching Wall to 50%

A/V – All lights in the room turn on and/or go to:

- General Lighting to 25%
- Teaching Wall to Off

WHITE Board - All lights in the room turn on and/or go to:

- General Lighting to 75%
- Teaching Wall to 100%

QUIET - All lights in the room turn on and/or go to 50%

OFF - Will turn off all lighting in the room

Raise/Lower (Up/Down Arrows at Bottom)

- This will cause all lights in the room to brighten or dim as one

Date edited: Monday, October 16, 2023

