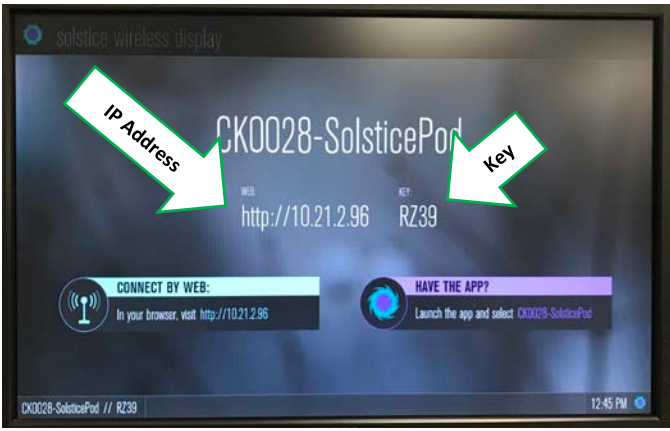


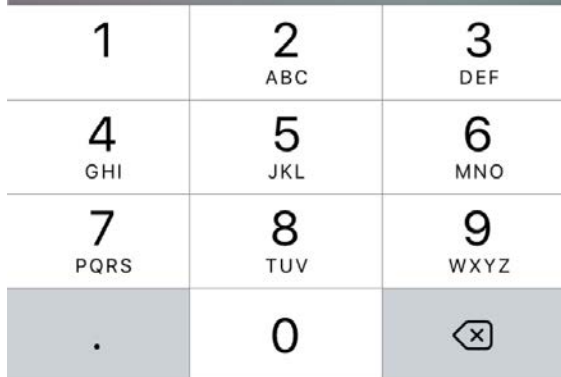
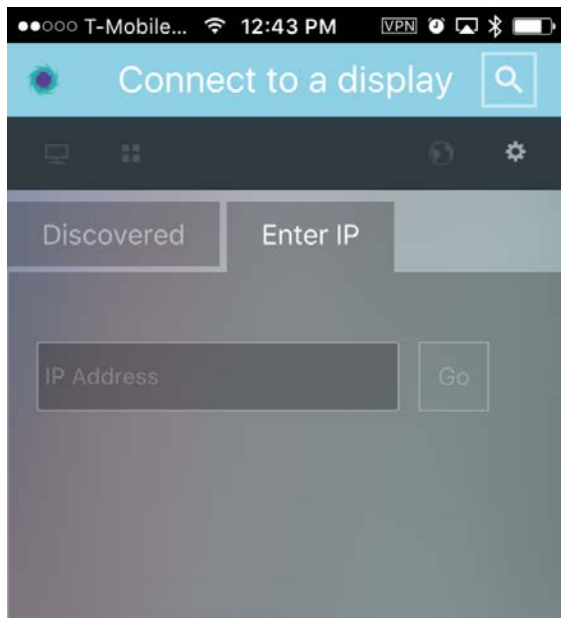
Using the Mersive Solstice Pod

You can use the Solstice Pod to wirelessly project a smartphone, tablet, or laptop. To do this, your device(s) **must be on the tu-secure wireless network.** If using a smartphone or tablet, you must download the "Solstice Client" from your app store.

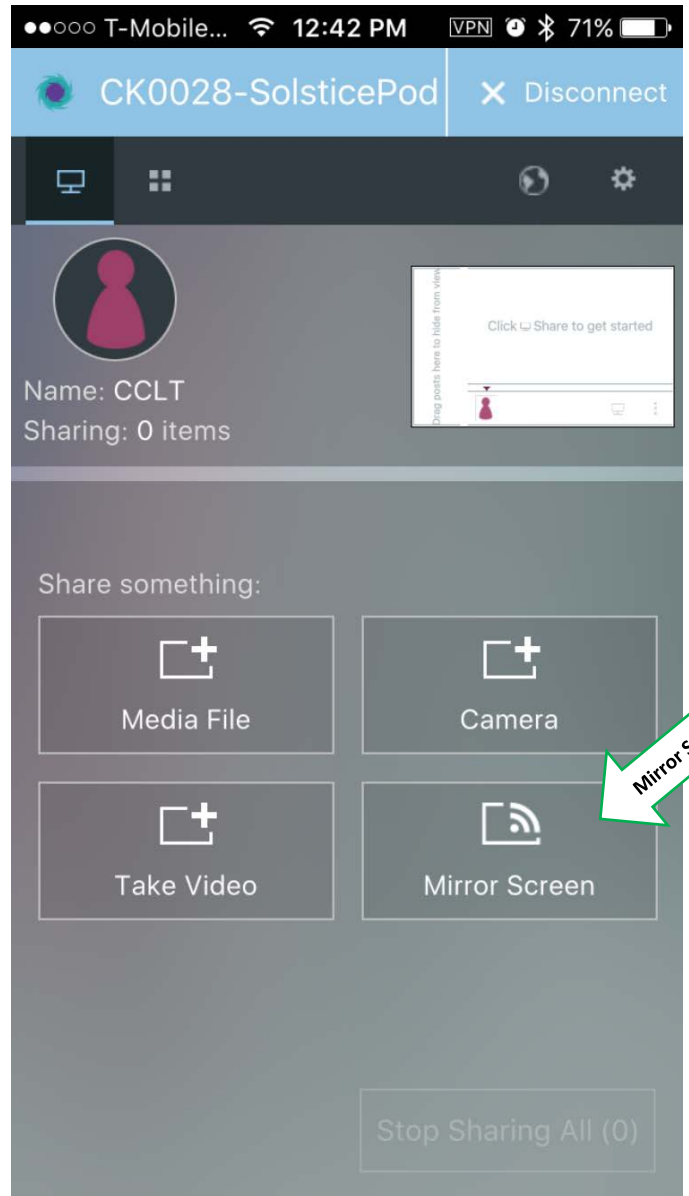


Smartphone/Tablet

You will need to enter the IP address of the Mersive SolsticePod in order to connect to it.



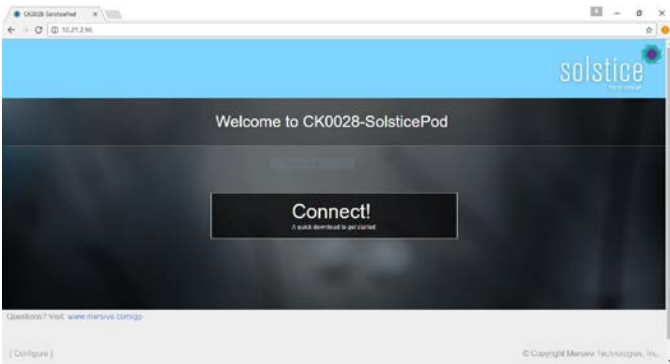
To mirror the screen, tap on the Mirror Screen button labeled below. You will then be prompted for the Key which is displayed next to the IP Address.



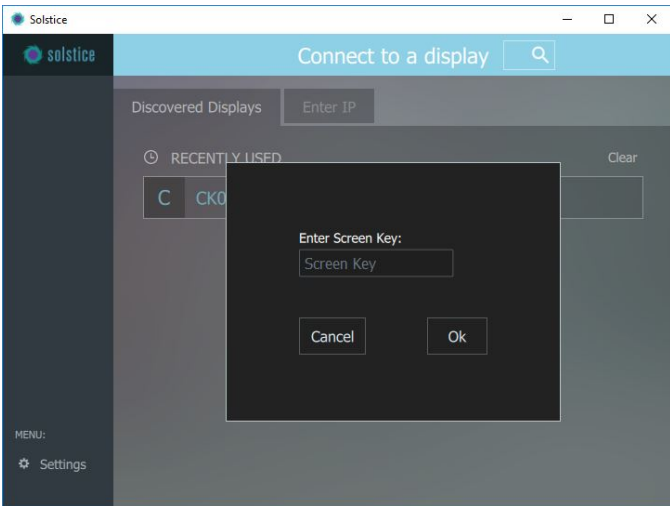
On iOS, you will need to open the AirPlay menu and select the device from the options listed.

Laptop/Web Browser

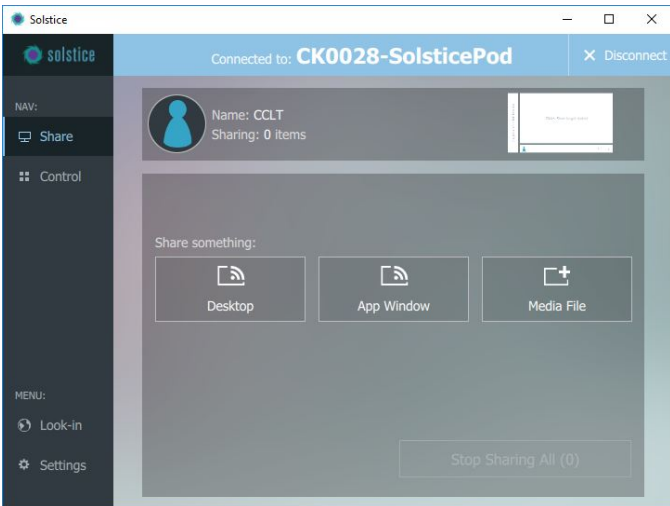
To mirror your screen from a laptop you will need to open a browser and type in the IP Address in the address bar (<http://10.XX.YY.ZZ>).



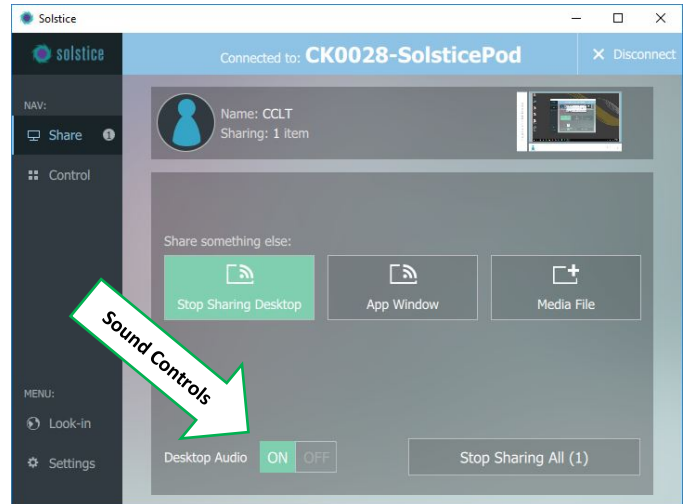
You then click Connect and are prompted to install an application. After Installation, you will be prompted to enter the Key.



After the Key is entered successfully, click on the Desktop button to share your screen.



You will have the ability to turn sound on or off from the application.



Note: It may take up to 10 seconds for the device mirroring to sync.